

MOUNTING BRACKETS

Brackets fit inside cores of **200, 210 and 270** type resistors and remain in place by spring tension. Standard brackets are plated steel and have no suffix to part number. Spring steel brackets are indicated with an "S" suffix following part number.

Standard	Part number	Spring steel	Mtg screw size (max.)	For resistors (power ratings)
⊕ 5	⊕ 5S	5S	6	8, 12 watt
✓ 7	⊕ 7S	7S	6	20 watt
⊕ 9	⊕ 9S	9S	6	25, 50, 75 watt
⊕ 12	⊕ 12S	12S	10	100 watt
⊕ 18	⊕ 18S	18S	10	175, 225 watt

THRU BOLTS

Thru-Bolts, with centering mica insulating washers, permit perpendicular mounting of **200, 210 and 270** type resistors to panels up to 0.25" thick.

Part No.	Bolt size	Length	No.	For resistors (power rating)
⊕ 7PA5	1.75"		8	8 watt
⊕ 7PA10	2.5"		8	12 watt
⊕ 7PA20	2.75"		8	20 watt
⊕ 7PA25	2.75"		10	25 watt
⊕ 7PA50	4.75"		10	50 watt
⊕ 7PA75	6.75"		10	75 watt
⊕ 7PA100	7.313"		10	100 watt
⊕ 7PA160	9.5"	0.25"		175 watt
⊕ 7PA200	11.5"	0.25"		225 watt

WASHERS

Metal Centering

Part No.*	Diameter Outer	Inner	For max. screw size	For resistors (power ratings)
⊕ 6000	0.563"	0.190	#10	25, 50, 75 watt
⊕ 6001	0.75"	0.190	#10	100 watt
⊕ 6003	1.125"	0.250	0.25"	175, 225 watt

Mica insulating

Part No.*	Diameter Outer	Inner	For resistors (power ratings)
⊕ 6010	0.75"	0.063"	25, 50, 75 watt
⊕ 6011†	0.75"	0.313"	25, 50, 75 watt
⊕ 6012	1"	0.063"	100 watt
✓ 6013†	1"	0.5"	100 watt
⊕ 6014	1.25"	0.063"	core 1" O.D. x 0.625" I.D.
⊕ 6015†	1.25"	0.625"	core 1" O.D. x 0.625" I.D.
✓ 6016	1.5"	0.063"	175, 225 watt
⊕ 6017†	1.5"	0.75"	175, 225 watt

† Use with centering washers.

ADJUSTABLE LUGS FOR 210 SERIES

One standard screwdriver type adjustable lug is supplied with each unit.

Two types of lugs can be ordered separately: standard or with a silver contact button; both types are available with either a screwdriver type or bakelite knob type lug.

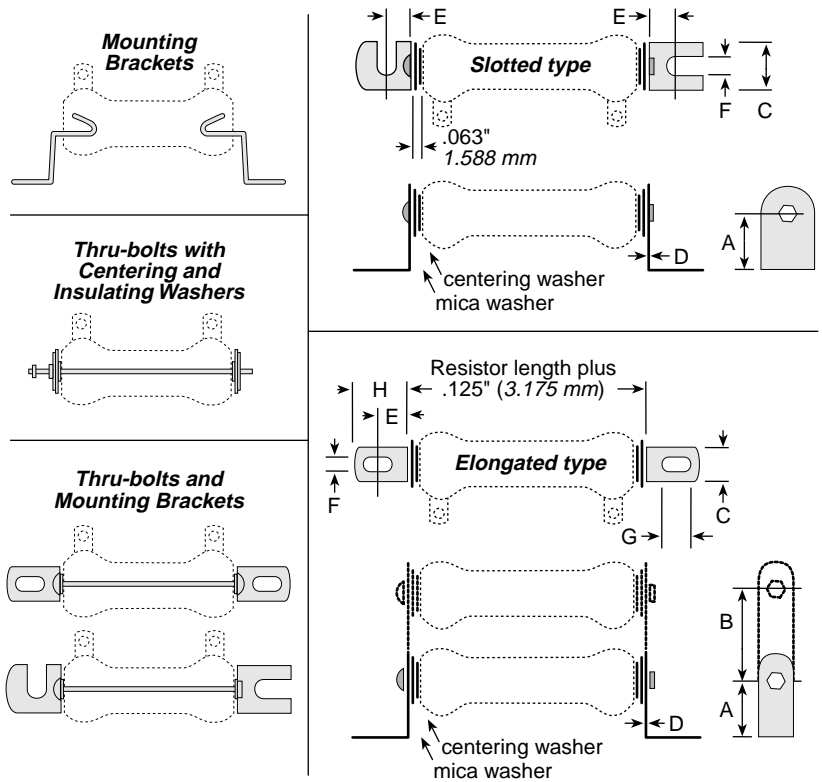
Resistor core diam. (In. / mm)	Stock part numbers			
	Standard		Silver	
	Screw	Knob	Screw	Knob
0.313 / 7.94	⊕ 2115	—	⊕ 2116	—
0.563 / 14.3	⊕ 121	⊕ 2122	✓ 2123	⊕ 2124
0.750 / 19.05	⊕ 2125	✓ 2126	⊕ 2127	⊕ 2128
1.125 / 28.58	✓ 2133	⊕ 2134	⊕ 2135	⊕ 2136

Double thumb screw Lug

(Part Number 2160) The double thumb screw adjustable lug permits easier adjustment and less chance of damage to resistance wire. Available for 1.125" cores only.

Resistor Mounting Hardware

For 200, 210, and 270 Series Resistors



THRU-BOLTS AND MOUNTING BRACKETS

Sturdy plated steel brackets, along with thru-bolts, centering washers and insulating washers (included), allow for secure mounting of **210** type and **270** type resistors. Mounting brackets are available in either slotted (one with end-slot/one with side-slot) or elongated styles.

Type	Dimensions							
	Slotted A	B	C	D	E	F	G	H
6101—	0.781"	—	0.75"	0.031"	0.438"	0.25"	—	—
6104—	0.781"	—	0.75"	0.031"	0.438"	0.25"	—	—
6110—	1"	—	1.125"	0.063"	0.813"	0.313"	—	—

Elongated								
Type	A	B	C	D	E	F	G	H
6120—	1"	—	0.5"	0.031"	0.422"	0.219"	.438	.750
6126—	1.5"	—	1.25"	0.063"	0.438"	0.281"	.563	.875
6127—	1.5"	2"	1.25"	0.063"	0.438"	0.281"	.563	.875
6128—	1.5"	2"	1.25"	0.063"	0.438"	0.281"	.563	.875
6129—	1.5"	2"	1.25"	0.063"	0.438"	0.281"	.563	.875

Part No.	No. of resistors	Resistor	Resistor	Type
Slotted	Elongated	per Bkt.	Size	
—	✓ 6120-D-1.75	1	12W	210/270
✓ 6101-2	✓ 6120-K-2	1	25W	210/270
⊕ 6101-4	✓ 6120-K-4	1	50W	210/270
✓ 6101-6	—	1	75W	210
⊕ 6104-6.5	—	1	100W	210/270
⊕ 6110-8.5	⊕ 6126-P-8.5	1	175W	210/270
—	⊕ 6127-P-8.5	2	175W	210/270
—	⊕ 6128-P-8.5	3	175W	210/270
—	✓ 6129-P-8.5	4	175W	210/270
✓ 6110-10.5	—	1	225W	210/270

⊕ = Most popular stock values

✓ = Stock values

⊕ = Non-stock values subject to minimum handling charge per item